



## DEAR LIFE

6 x 60 for STAN AUSTRALIA

A heartwarming drama that follows a young woman's emotional journey as she navigates the pain of losing her fiancé. She embarks on a life-changing quest to meet the recipients of his organ donations, unknowingly setting off an intricate web of connections. With wit, warmth, and heart, this captivating story is a tale of love, loss, and the unexpected ways in which life can begin anew. Starring Brooke Satchwell, Eleanor Matsuura, Ben Lawson and Ryan Johnson.



**DI RAY**  
10 x 60 for ITV1

Rachita Ray navigates the complex murder investigations while confronting issues of race, identity, and police bias.



**BLOODLANDS**  
10 x 60 for BBC ONE

Detective Tom Brannick is pulled into a cold case linked to his past, chasing the elusive killer known as Goliath.




**PAYBACK**  
6 x 60 for ITV1

Following Lexie Noble, who becomes entangled in a perilous police operation to topple crime lord Cal Morris.




**FLACK**  
12 x 60 for UKTV & POP

A self-destructive PR agent who expertly manages celebrity crises while her own personal life unravels behind the scenes.



**DOCTOR THORNE**  
3 x 60 for ITV1

A village doctor's niece falls for a wealthy heir, clashing with his mother who wants a rich bride to save the estate.



**BODIES**  
16 x 60 + 1 x 90 for BBC THREE

In a gritty maternity ward, young doctor Rob Lake uncovers his boss's deadly mistakes amid scandal, sex, and moral conflict.





**SERIES 2  
COMING!**



# SMOGGIE QUEENS

**12 x 30 for BBC**

An out and proud comedy centred around a gang of friends - volatile Dickie, drag queen Mam, self-styled babe Lucinda, awkward Sal and queen newcomer Stewart as they navigate love, life and their pride for a town that feels neglected in its own little corner of the UK. A show bursting with heart and humour.

**BEST COMEDY  
BEST NEWCOMER - PHIL DUNNING**



## EPISODES

**41 x 30 for BBC TWO**

A British comedy duo's Hollywood dream unravels, jeopardizing their show and their marriage.



**3 BAFTAS  
6 ROYAL TELEVISION SOCIETY  
3 BROADCASTING PRESS GUILD  
1 INTERNATIONAL EMMY**

## DERRY GIRLS

**18 x 30 + 1 x 60 for CHANNEL 4**

An award-winning sitcom about teenage girls finding laughter and truth while growing up in conflict.



## ROSEHAVEN

**40 x 30 for ABC AUSTRALIA**

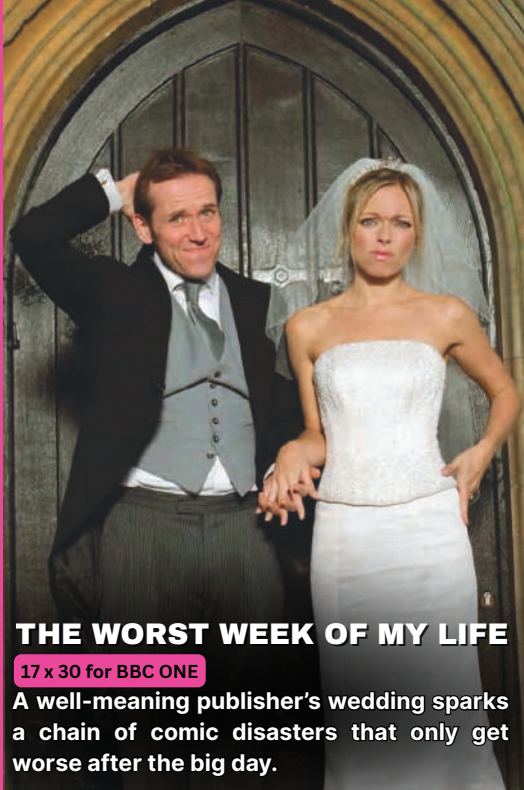
Daniel returns home to run the family real estate business in rural Tasmania in this charming and quirky comedy.



## THE ARMSTRONG AND MILLER SHOW

**20 x 30 for BBC ONE**

A sharp, irreverent sketch show with two actors playing over 100 outrageous and eccentric characters.



## THE WORST WEEK OF MY LIFE

**17 x 30 for BBC ONE**

A well-meaning publisher's wedding sparks a chain of comic disasters that only get worse after the big day.

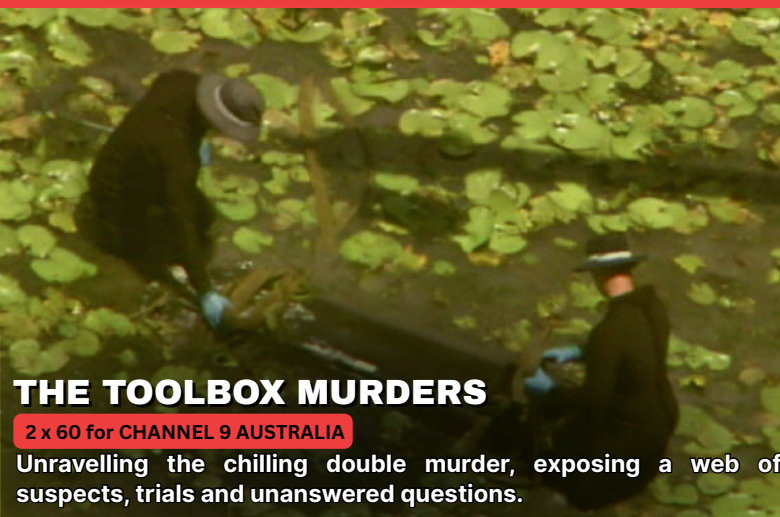


## OUTNUMBERED

**31 x 30 + 5 x 40 for BBC ONE**

Two overwhelmed parents struggling to stay afloat amid the daily chaos of raising three wildly unpredictable kids.





## THE TOOLBOX MURDERS

2 x 60 for CHANNEL 9 AUSTRALIA

Unravelling the chilling double murder, exposing a web of suspects, trials and unanswered questions.



## THE BYRON BAY MURDERS

2 x 60 for CHANNEL 9 AUSTRALIA

Investigating 67 unsolved murders and disappearances of young women along Australia's east coast.



## THE CATFISH NEXT DOOR

3 x 60 for BBC THREE

Revealing the decade-long cyberstalking crimes of Adele Rennie, an ex-NHS nurse who deceived victims through a network of fake identities.

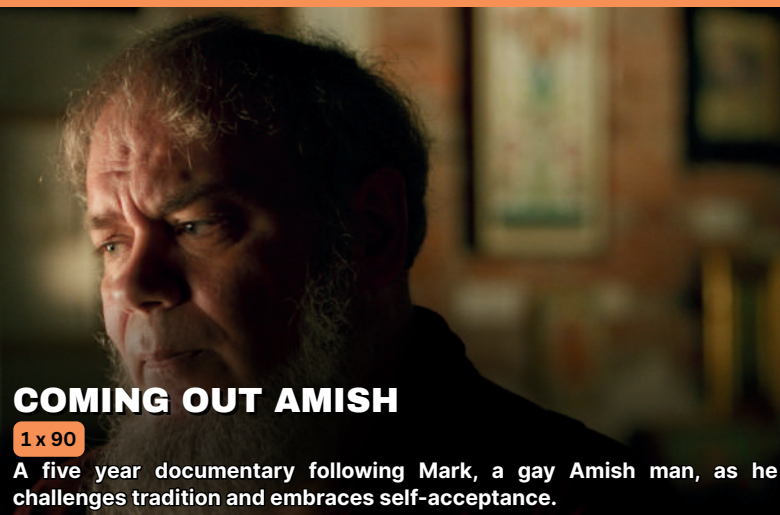


## ROSE WEST: BORN EVIL?

1 x 60 for CHANNEL 5

Revealing pivotal moments in Rose West's traumatic childhood that shaped her path to becoming one of Britain's most infamous serial killers.

## REAL LIFE STORIES



## COMING OUT AMISH

1 x 90

A five year documentary following Mark, a gay Amish man, as he challenges tradition and embraces self-acceptance.



## WELCOME TO BRITAIN

1 x 90 for CHANNEL 4

Migrants risk everything to reach the UK, while communities struggle with the growing divide over their arrival.



## BRITAIN'S MEGAPORT

4 x 60 for CHANNEL 5

Unprecedented access to Aberdeen's bustling port, capturing the scale, skill, and nonstop drama behind Europe's oil capital and its vital maritime operations.

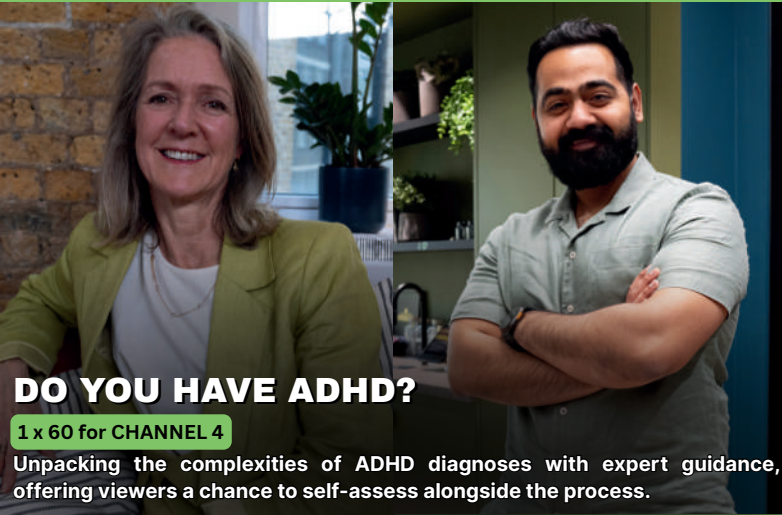


## JAMES MAY'S GREAT EXPLORERS

3 x 60 for CHANNEL 5

James charts the journeys of Christopher Columbus, Sir Walter Raleigh and Captain James Cook and explores whether they really were "great" after all.



**DO YOU HAVE ADHD?**

1 x 60 for CHANNEL 4

Unpacking the complexities of ADHD diagnoses with expert guidance, offering viewers a chance to self-assess alongside the process.



**WHAT NOT TO EAT**

4 x 60 for CHANNEL 4

Discovering how removing ultra-processed foods can ease common health issues, with families guided by Professor Tim Spector and Dr Kandi Ejiofor.



**MICHAEL MOSLEY: SECRETS OF YOUR BIG SHOP**

4 x 60 for CHANNEL 4

Dr Michael Mosley goes undercover in supermarkets to expose how shopping habits impact health and show shoppers how to eat better.



**DO YOU WANT TO LIVE FOREVER?**

4 x 60 for CHANNEL 9 AUSTRALIA

Investigating cutting edge longevity science, and helping everyday people wind back their biological clocks.

◦ **LIFESTYLE** ◦



**JOHNNY VEGAS' LITTLE SHOP OF ANTIQUES**

8 x 60 for DISCOVERY QUEST



**TWO MEN ON A BIKE**

4 x 60 for MORE 4



**JAMES MAY'S SHED LOADS OF IDEAS**

8 x 60 for DISCOVERY QUEST



**GEORGE CLARKE'S BUILDING HOME**

16 x 60 for CHANNEL 4



**GEORGE CLARKE'S BEAUTIFUL BUILDS**

12 x 60 for CHANNEL 4



**INSIDE THE FOUR SEASONS AT PARK LANE**

11 x 60 for CHANNEL 5